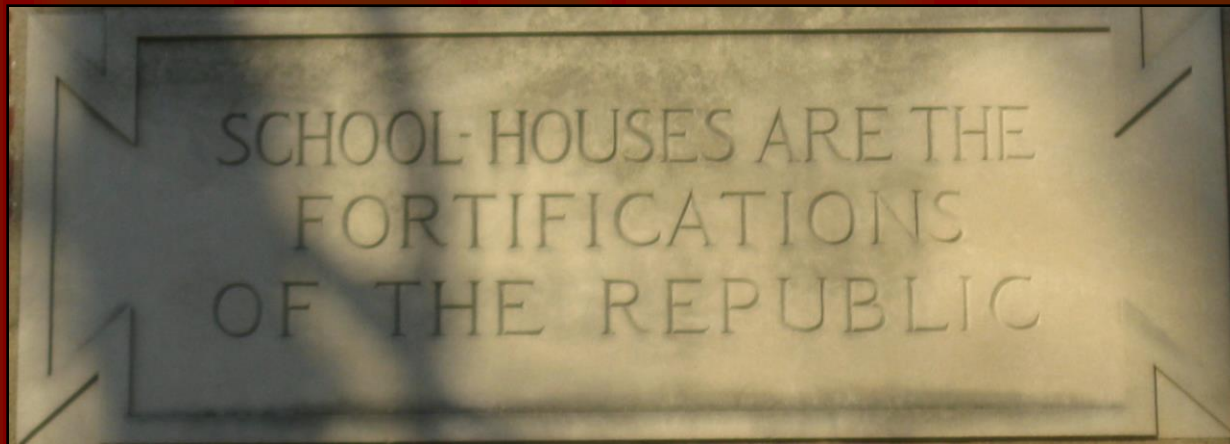


Old Ohio Schools



By: Aaron Turner

www.oldohioschools.com

Findlay City Schools

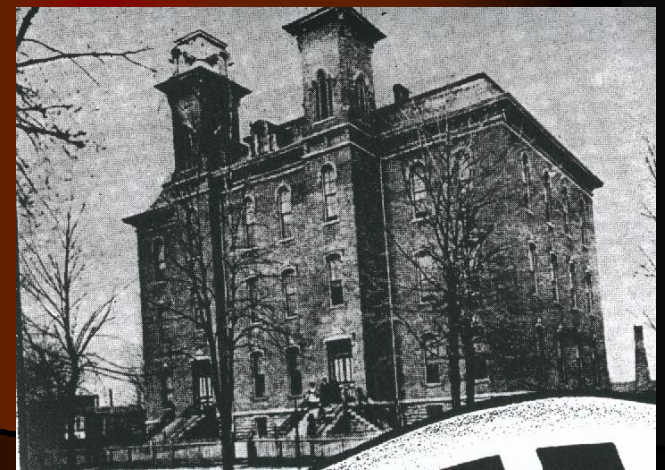
Part I

The Schools of the 1860s



Old Central
School
(Union School)

East Sandusky Street
Built: 1868
Closed: 1916
Demolished



North End

Taylor School #1

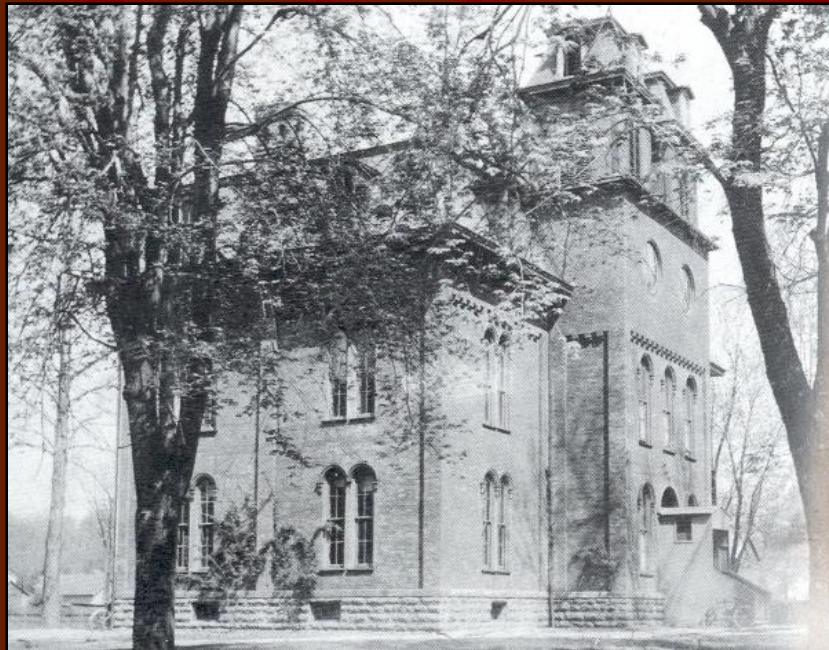
North Main Street

Built: 1860

Demolished: 1877

No Photo
Available

South End



Gray School

West Lincoln Street

Built: 1865

Demolished

Findlay City Schools

Part II

The Schools of the 1880s



Taylor School #2 (North Findlay School)

North Main Street

Built: 1877

Closed: 1916

Demolished





Adams School

Washington Street

Built: 1887

Closed: 1982

Alexander Place Condos



1958 addition



Bigelow School

France Street
Built: 1887
Closed: 1950
Demolished



Blanchard Street School (Huber School)

Blanchard Avenue
Built: 1887, 1889
Closed:
Abandoned





Detwiler School (Byal School)

1130 Lima Avenue

Built: 1887

Demolished: c. 1960

*Razed For I-75/
Lima Ave. Interchange*



Firmin School

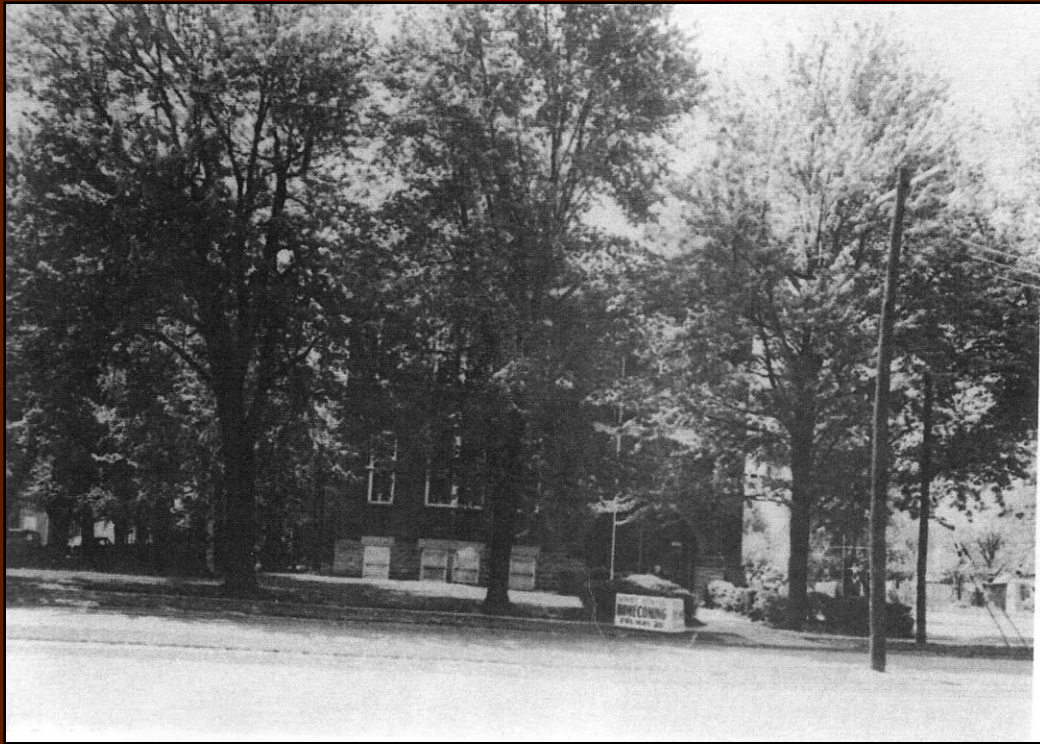
East Hobart Street
Built: 1887
Demolished



Howard School #1

Morey Street @ Davis Street
Built: 1887, 1889
Burnt: 1910





McKee School

Carnahan Avenue @ Tiffin Avenue

Built: 1887

Demolished



Paxton School

Blanchard Avenue @ 6th Street

Built: 1887

Demolished

Shown while used as a private residence



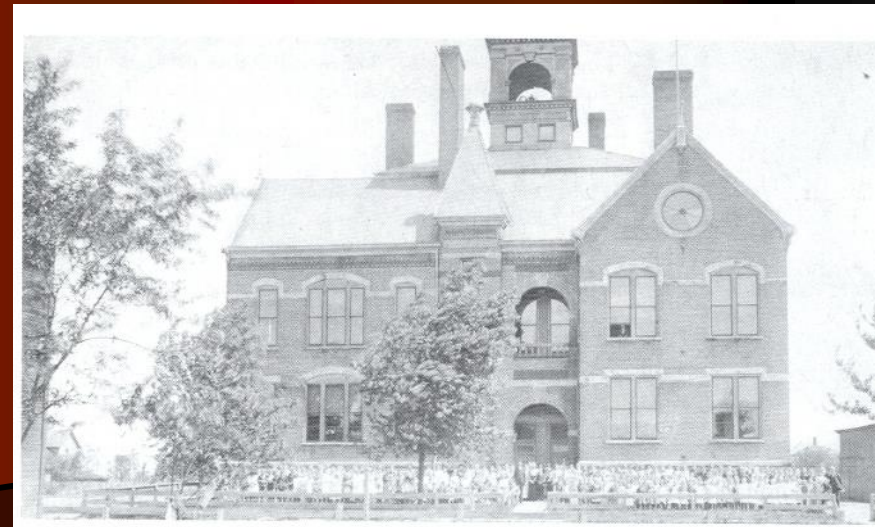
Strother School

North Blanchard Street

Built: 1888, 1889

Closed: 1916

All Start Heating & Plumbing



Findlay City Schools

Part III

1900-1915



Findlay High School #1

West Main Cross

Built: 1901

Demolished: 1938

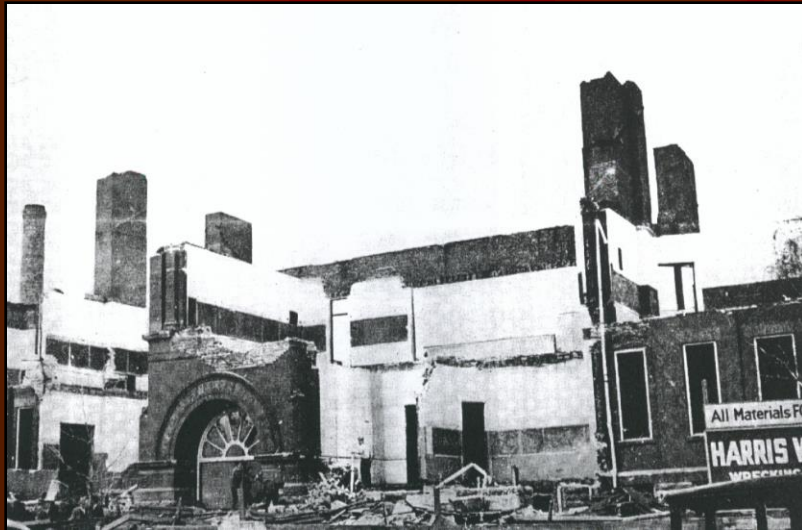




Auditorium



Girls Glee Club Under Main Entry



Demolition



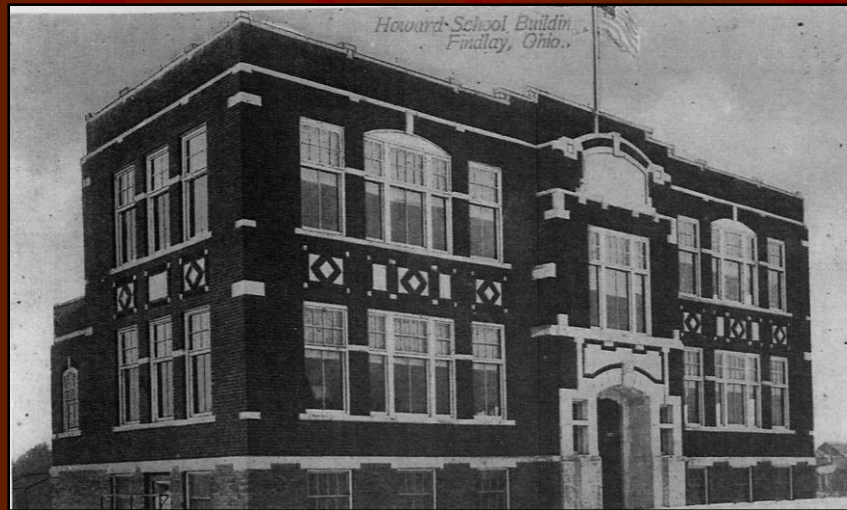
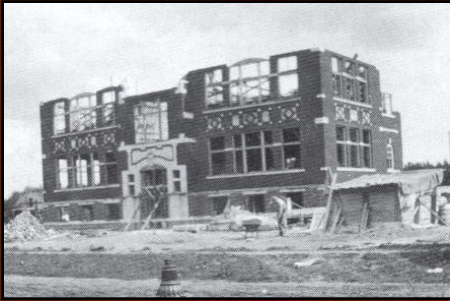
Present Day

Howard School #2

Morey Street @ College Street

Built: 1910

Demolished: 1985



Cherry Hill School
Washington Court House, OH
Built: 1912





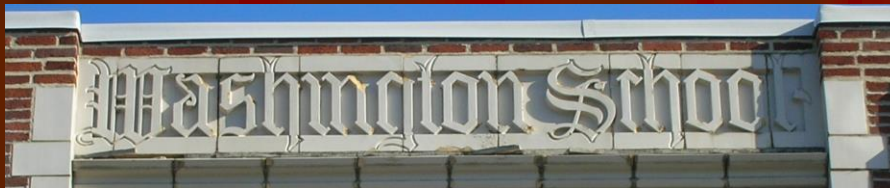
Washington School

338 North Main Street

Built: 1915, 1958, 1962

Closed: 2008

Church of the Living God





Lincoln School

200 West Lincoln Street
Built: 1915 & Additions

Functional



Findlay City Schools

Part IV

The 1920s



Findlay High School #2

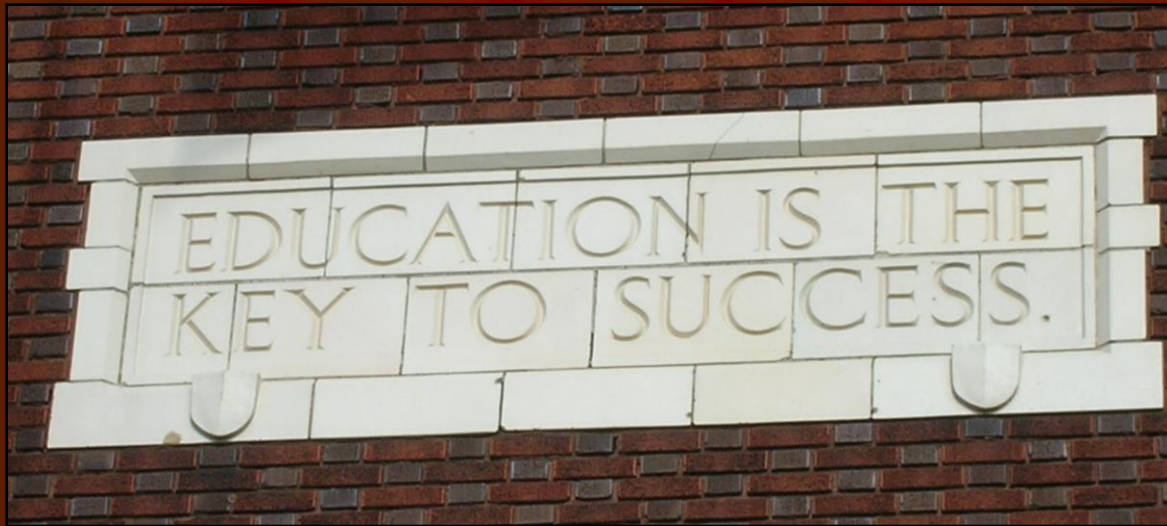
West Main Cross

Built: 1923

Closing: 2013

Endangered





John Henry Jackson

1903-1977



Socrates

469-399 BC



Findlay Auditorium

West Main Cross
Built: 1939



Middletown
High School
Auditorium
Built: 1923





J.C. Donnell Junior High School

Baldwin Avenue
Built: 1925, 1957, 1959
Closing: 2011
Demolition Pending





Glenwood Junior High School

North Main Street

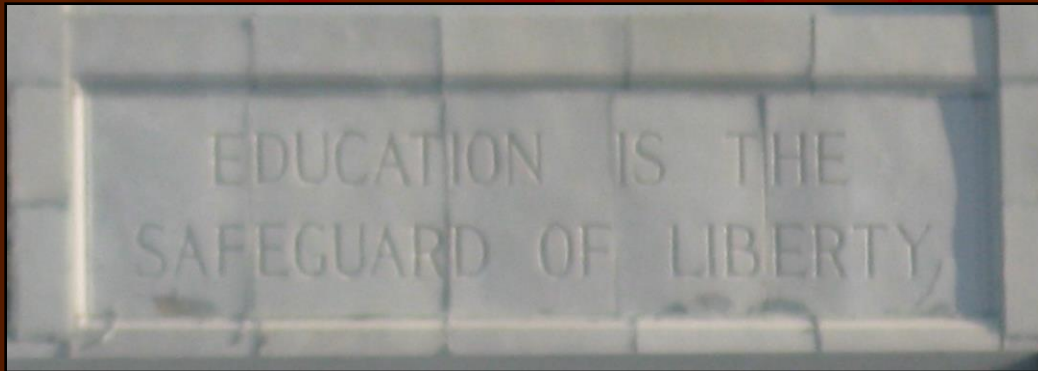
Built: 1925, 1956

Closing: 2013

Demolition Pending



Junior High Quotes



GLENWOOD-North end

Edward Everett

1794-1865

DONNELL-East end

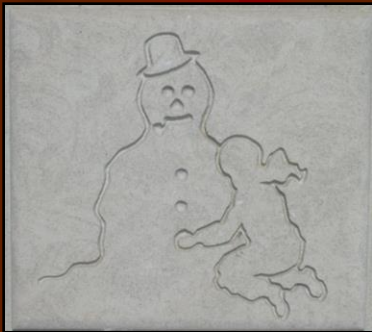
Unknown



Findlay City Schools

Part V

Schools Since 1950



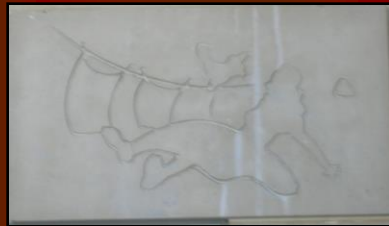
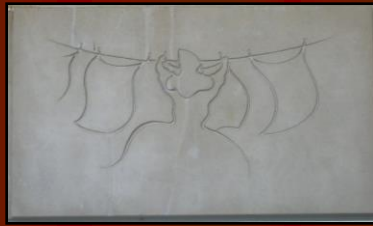
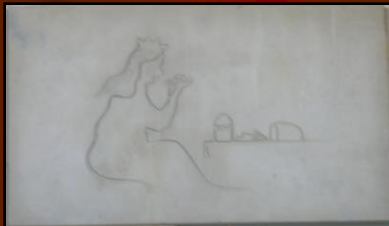
Jefferson School

204 Fairlawn Place
Functional



Northview School

133 Lexington Avenue
Functional



Whittier School

733 Wyandot Street
Functional



McKinley School

620 Lynn Street

Closed: 1982

*Millstream East Career &
Technology Center*



Ben Franklin School
(Washington School #2)

1100 Broad Avenue
Functional



Bigelow Hill School

300 Hillcrest
Functional



Chamberlin Hill School

600 West Yates
Functional



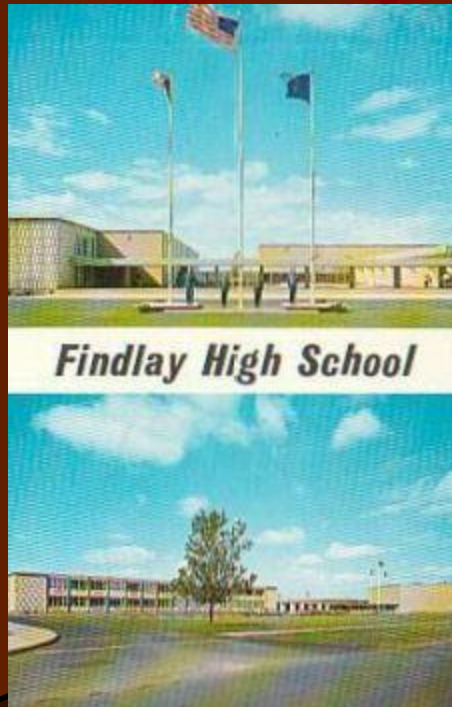
Wilson Vance School

610 Bristol Avenue
Functional



Jacobs School

Jacobs Avenue
Functional

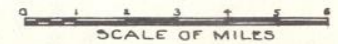


Findlay High School #3

1200 Broad Avenue
Functional

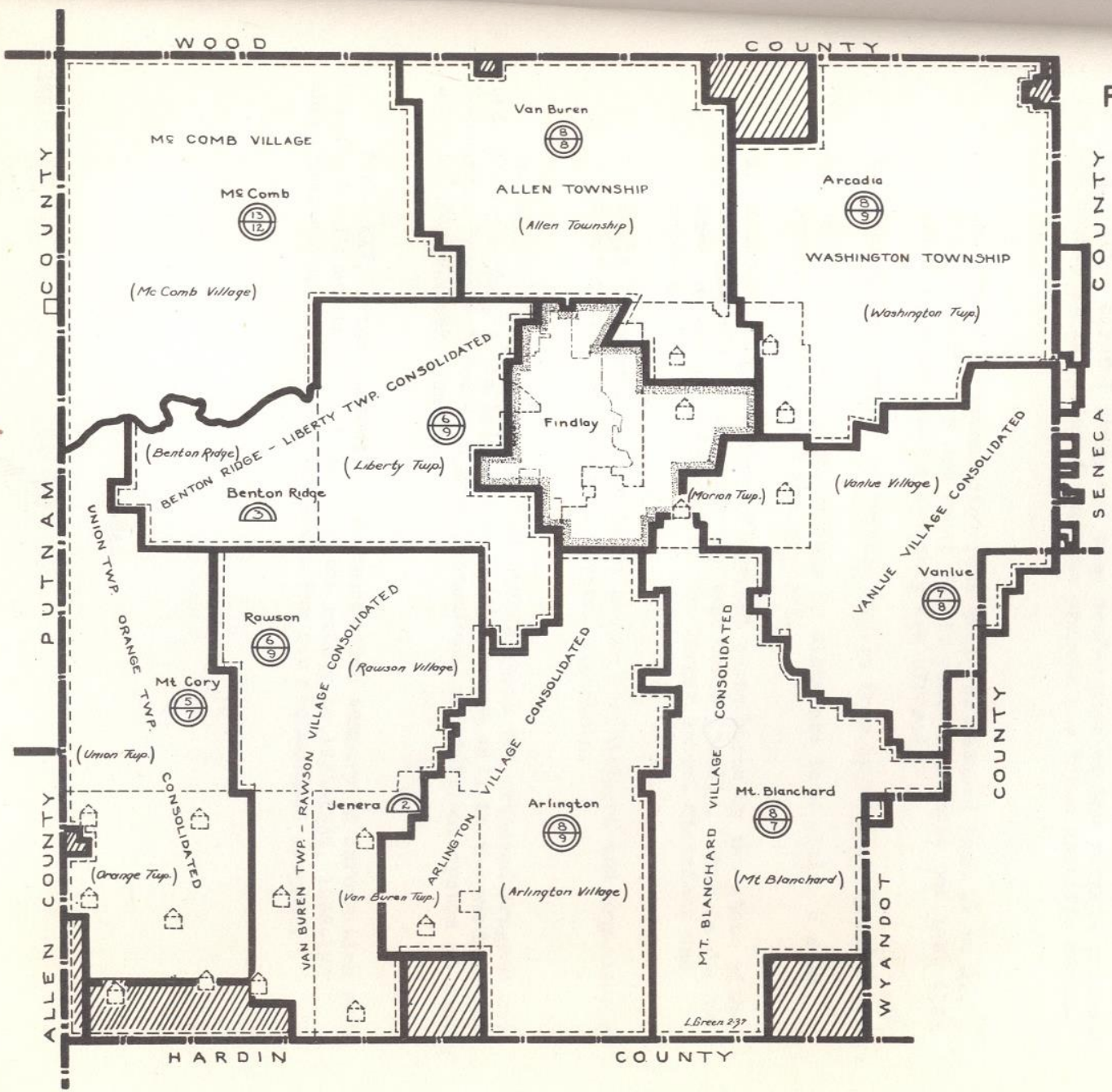
Hancock County Schools

MAP 3
HANCOCK COUNTY
PROPOSED SCHOOL
DISTRICTS



LEGEND

- County Line.
 - District line.
 - 1935-36 School district line.
 - Corporation line.
 - Area transferred to adjoining county school system.
 - City school district.
 - One teacher elementary. To be closed.
 - 1-6 Grade elementary. Two or more teachers.
 - 1-6 and 9-12 Grade combination.
- NOTE: Figures in above symbols show number of teachers.



L. Green 237

TABLE XVI. SCHOOL BUILDING DATA BY DISTRICTS,^a HANCOCK COUNTY, OHIO, 1935-1936

Buildings by District	Grades Taught	Year Erected	Fire-proof	Rating ^b	Cost of Building ^c	Year Debt Retired	Additional Pupil Accommodation		
							Elem.	H.S.	Total
Allen	1-12	1916	Yes	E	\$ 55,000	-----	58	18	73
Arlington V.	1-12	1923 ^d	Yes	E	120,000	1945	92	60	152
Benton Ridge V.	1-8	**	No	F	20,000	-----	48	--	48
Liberty	1-12	** ¹⁹²¹	Yes	E	202,000	1953	76	40	116
McComb V.	1-12	1934	Yes	E	303,759	1945	270	63	333
Mt. Blanchard V.	1-12	1924	Yes	E	116,000	1946	104	50	154
Rawson V.	1-12	1918	Yes	E	72,000	1937	**	0	**
Union	1-12	1910 ^d	Yes	E	93,000	1941	105	100	205
Van Lue V.	1-12	1923	Yes	E	150,000	1947	71	34	105
Washington Twp.	1-12	1921 ^d	Yes	E	230,000	1946	0 ^e	0 ^e	0

SOURCE: Forms 7A and 10, Study of Local School Units.

^aOnly buildings having more than two rooms are included.

^bE-Excellent; F-Fair; P-Poor; U-Unsatisfactory.

^cIncludes cost of equipment.

^dAn addition built since then.

^eOvercrowded.

**No data.



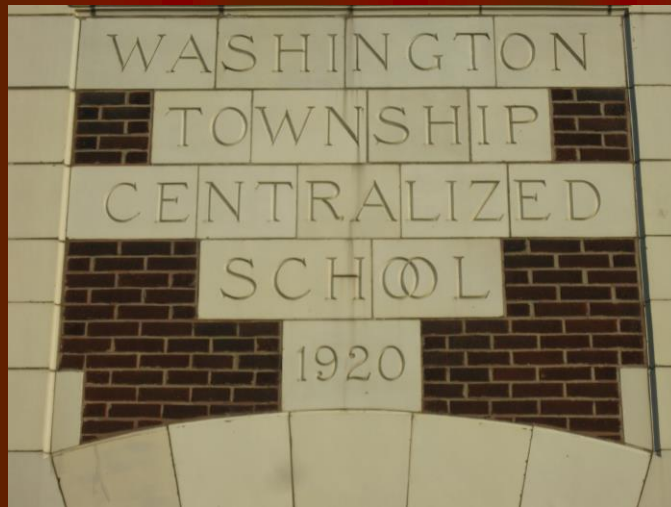
Arcadia School
#1

Location Unknown
Gone



Washington Township Centralized School

State Route 12
Arcadia
Built: 1920
Endangered





Arcadia School #3

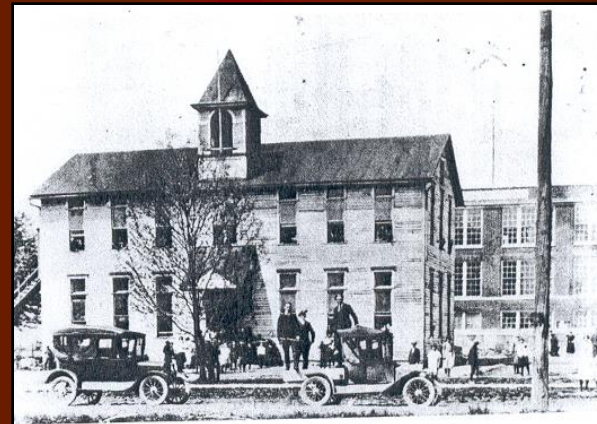
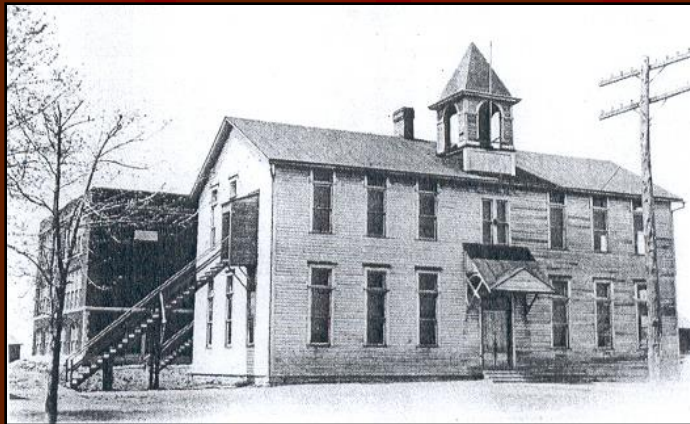
State Route 12
Endangered

ARCADIA



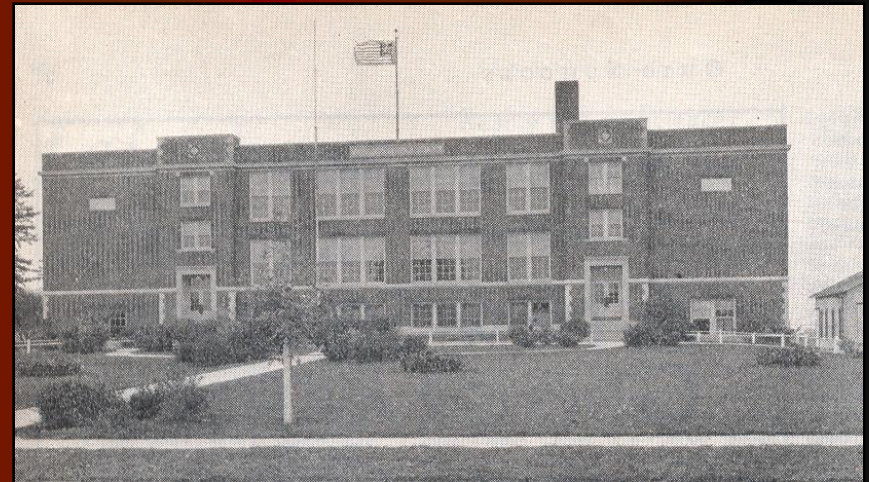
Arlington School #1

US Route 68
Gone



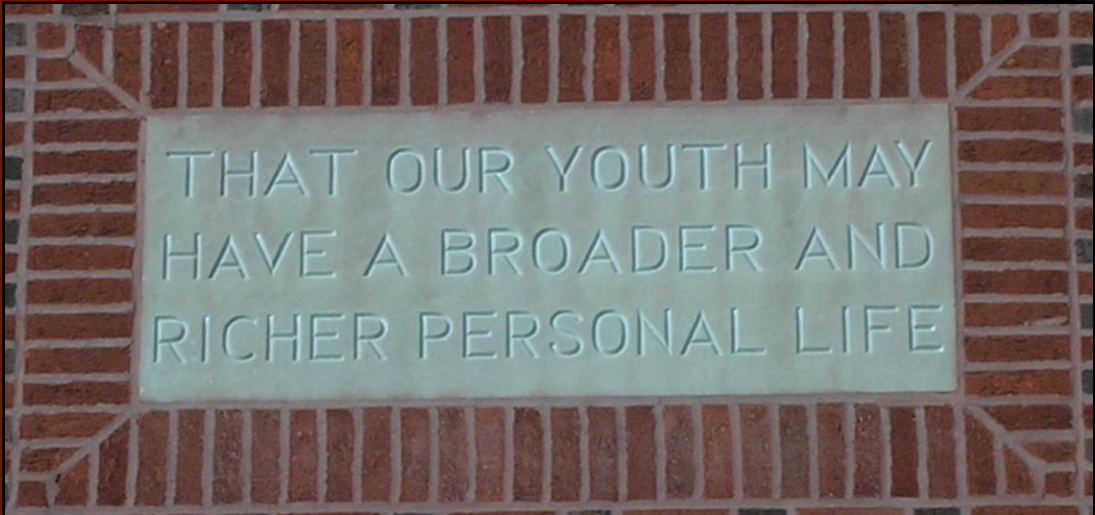
Arlington District School

US Route 68
Built: 1923
Functional





THE FOUNDATION OF
EDUCATION IS THE
DESIRE TO LEARN

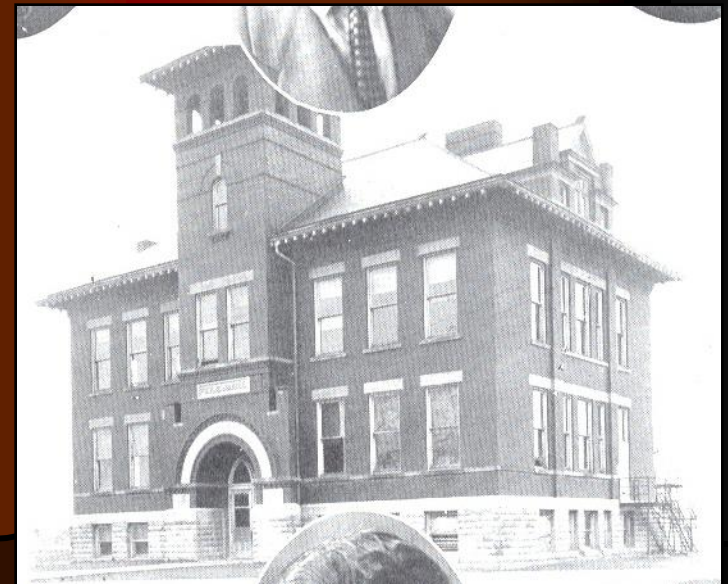


THAT OUR YOUTH MAY
HAVE A BROADER AND
RICHER PERSONAL LIFE



Benton Ridge School

Pine Street
Built: 1892
Demolished:
Gone





Liberty Township Centralized School

State Route 12
Built: 1921
Functional



High School, McComb, O.



McComb School #1

North Todd Street
Built: 1885
Demolished:
Gone

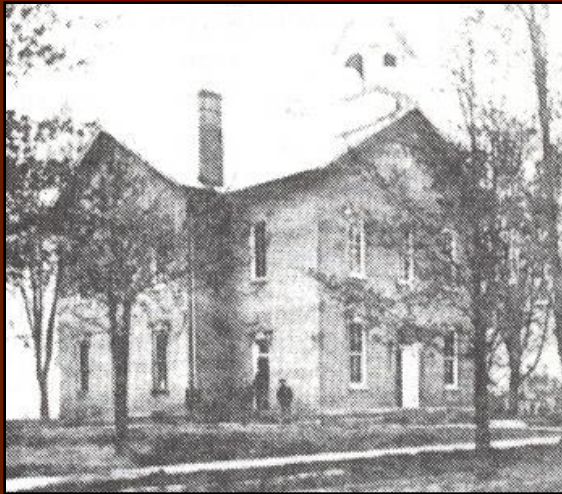




McComb Centralized High And Grade School

South Todd Street
Built: 1923
Functional





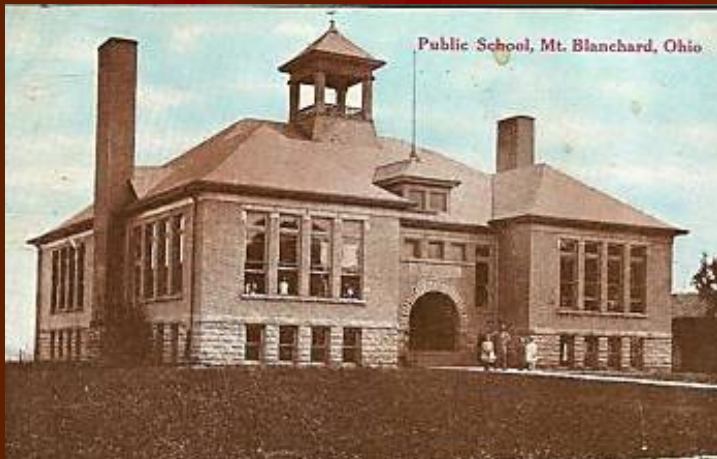
Mount Blanchard School #1

State Route 37

Built: 1873

Demolished: 1908

Gone



Mount Blanchard School #2

State Route 37

Built: 1908

Demolished: 1950

Gone



Mount Blanchard School #3

State Route 37
Built: 1924, 1950
Demolished: 2004
Gone



No Photo
Available

Jenera School

No Photo
Available

Mount Cory School #1



Union Township School

State Route 235
Mt. Cory
Built: 1910
Demolished:
Gone





High School, RAWSON, O.

Rawson School #1

Main Street
Gone



Public School, Rawson, Ohio

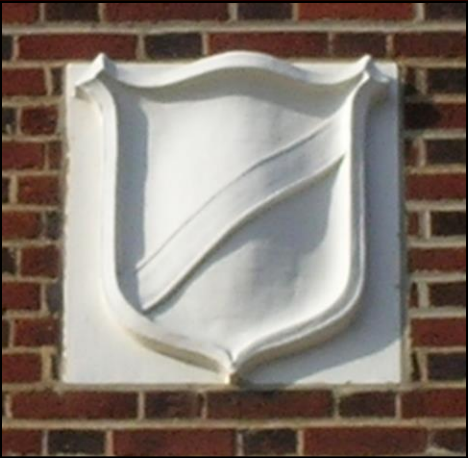
Rawson School #2

220 South Main Street

Built: 1918

Closing: 2013

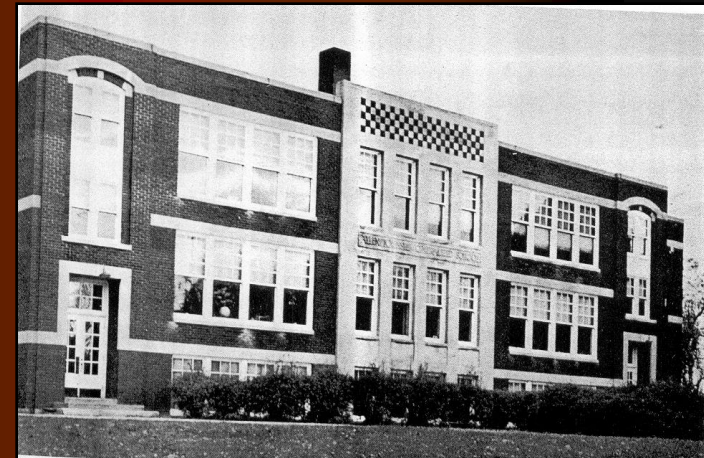
Demolition Pending





Allen Township Centralized School

217 South Main Street
VanBuren
Built: 1916
Functional



No Photo
Available

VanBuren School #1

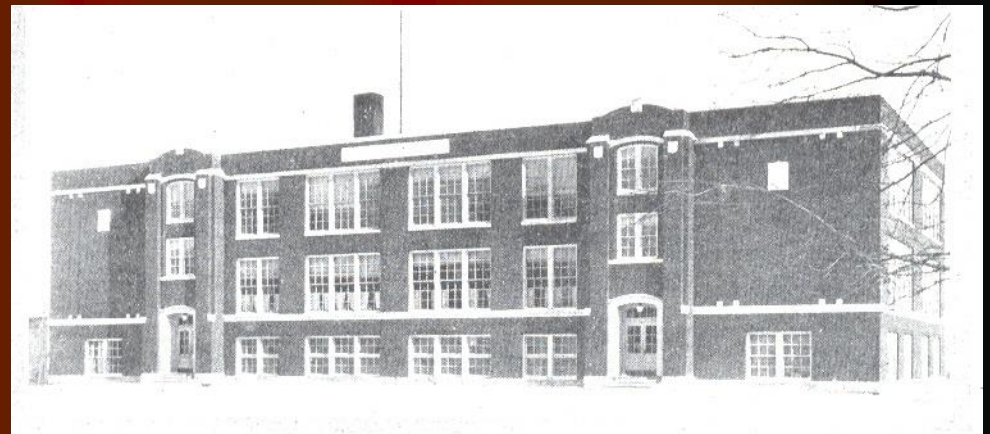
No Photo
Available


Vanlue School #1



Vanlue District School

301 East Street
Built: 1923
Functional



A stone plaque is mounted on a red brick wall. The plaque features a decorative border with a central urn-like finial at the top and a draped ribbon motif at the bottom. The text is carved in a serif font and reads: THE COMMON SCHOOL IS THE GREATEST DISCOVERY EVER MADE BY MAN.

THE COMMON SCHOOL IS
THE GREATEST DISCOVERY
EVER MADE BY MAN